

RAGTIME® 6



SlideTime The Presentation Module for RagTime 6.5

RagTime.de Development GmbH

This manual was written by Martin Stecher and revised by Jens F. Adam.

The layout was designed by H. Erich Fraas and Jens F. Adam using Meta fonts (Erik Spiekermann, FontShop). Formulas, special characters and keycap symbols are set in Zapf Dingbats (Hermann Zapf, International Typeface Corporation), Prestige 12 Pitch (Bitstream Inc), Zeal (The Font Bureau) and Hilden 95 (Jens F. Adam, RagTime.de Development GmbH).

Version: 6.5 en (March 30, 2009)

Internet: www.ragtime-online.com (English)

www.ragtime.de (German)

E-Mail: rtinfo@ragtime.de

RagTime is a registered trademark of RagTime.de Development GmbH.
All other trademarks belong to their respective holders.

© 1996–2009 RagTime.de Development GmbH. All rights reserved.

CHAPTER

1



Overview


1.1 WELCOME – SLIDETIME


This is the documentation for SlideTime, an add on for RagTime. Please refer also to the documentation shipped with RagTime which is mentioned in this manual.



The RagTime 6.5 documentation consists of several parts on various media:

- **First Steps with RagTime** (on screen)
An interactive introduction presented when RagTime 6.5 first launches.
- **Training Manual** (printed, PDF document)
The basics in 13 easy exercises for beginners to RagTime 6.5.
- **RagTime 6.5 Reference** (printed, on screen, [PDF document](#))
All about RagTime documents and their components, detailed descriptions of all windows, palettes, commands, dialog boxes and their panels.
- **RagTime Formulas and Functions** (on screen, [PDF document](#))
Descriptions and examples of calculation functions and operators.
- **The RagTime Web Site** (Internet)
Latest news around RagTime 6.5. Visit <http://www.ragtime-online.com> (English) or <http://www.ragtime.de> (German) or <http://experts.ragtime.de> for the expert pages (German).

The complete RagTime 6.5 documentation is suitable for  Microsoft Windows and  Mac OS users alike. **Differences between operating systems** are marked with special symbols.

 Procedures and functions typical for Windows are marked like this paragraph. For short remarks, you'll find this symbol in the body text as well.

 This symbol points out functions and commands typical for the Mac OS.

The **on-screen documentation** is installed with the program. It contains detailed descriptions of commands, features, functions etc. and is best used to look up information. All topics are interconnected by hyperlinks and a number of search facilities are available (index, list of commands, list of functions, full text search.) Commands to open the on-screen documentation are available in the RagTime menus INFO () or HELP (), respectively.

1.2 CONTENTS

1	Overview	3
1.1	Welcome – SlideTime	4
1.2	Contents	5
2	SlideTime	6
2.1	About SlideTime	7
2.2	Slide Show (Command)	7
2.3	SlideTime Panel, Settings	7
2.4	SlideTime Panel, Document Settings	8
2.5	SlideTime and AppleScript	11
2.6	About SlideTime Functions	13
2.7	STStart (Function)	14
2.8	STStop (Function)	14
2.9	STLayout (Function)	14
2.10	STSlideCount (Function)	15
2.11	STShownPage (Function)	15
2.12	STRequestedPage (Function)	15
2.13	STNextPage (Function)	15
2.14	STUpdate (Function)	16
2.15	STStartTime (Function)	16
2.16	STLastChange (Function)	16
2.17	STPreparePage (Function)	17
2.18	STSetPreviousPage (Function)	17
2.19	SlideTime Sample Documents	17

CHAPTER

2

SlideTime

In this chapter, you will learn everything about SlideTime.

2.1 ABOUT SLIDETIME

SlideTime is the integrated presentation module for RagTime 6.5.

2.2 SLIDE SHOW (COMMAND)

After installation SlideTime is integrated in your RagTime application, as if it belongs to the program from the very beginning. Look in the EXTRAS menu: Around the menu's center you can see the SlideTime command SLIDE SHOW. This command is available, if a layout window of a RagTime document is active. Just try the command, then click the mouse button to go to the next page or press the <esc> key to quit the slide show again. Please note that in a slide show you will see only "printing" objects, the shown slide is more a print-out than a screen shot.

Manual Control

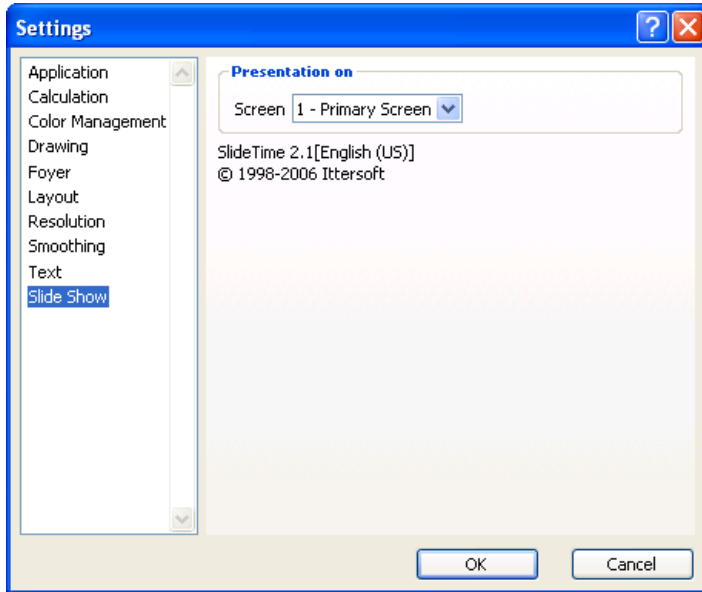
There are many ways to control a slide show with both the mouse and the keyboard. With a mouse click you go to the next page/slide. If more than one monitor is connected to your computer, you have to click onto the monitor on which the slide show is presented. You can also use the keyboard to go to the next slide: use the <space> key, the <tab> key or the arrow keys "right" or "down". Do you want to go a slide backward? Just press the arrow keys for "left" or "up" or the backward delete key. To go to any other page, type in the page number. If your document has more than nine pages, you have to type the page numbers with leading zeros (to go to page seven in a 300 pages document, type in "007"). To stop a slide show, press the <esc> key, the <enter> key or the <return> key.

While you are presenting a slide, SlideTime is preparing the next one in the background. So if you show a slide for some time and then click to forward to the next page, the page will change immediatly. However if you change slides rapidly or jump to a different one but the next slide, SlideTime will not yet be prepared and has to create the slide in the background first. This creation takes approximatly the same amount of time it takes the complete page to display in a layout window, only pages with complex objects will need several seconds (of course this depends on the power of the computer you are using). While waiting you will see the "Roderich" cursor – the squirrel of RagTime 6.5.

2.3 SLIDETIME PANEL, SETTINGS

To view this panel, choose the command SETTINGS from the menu EXTRAS and select the panel SLIDETIME.

If more than one monitor is connected to your computer, you can use this panel to specify on which monitor the slide shows will be presented. The monitor with the menu bar is labeled MAIN SCREEN. The monitor choice is independent from the presented documents.



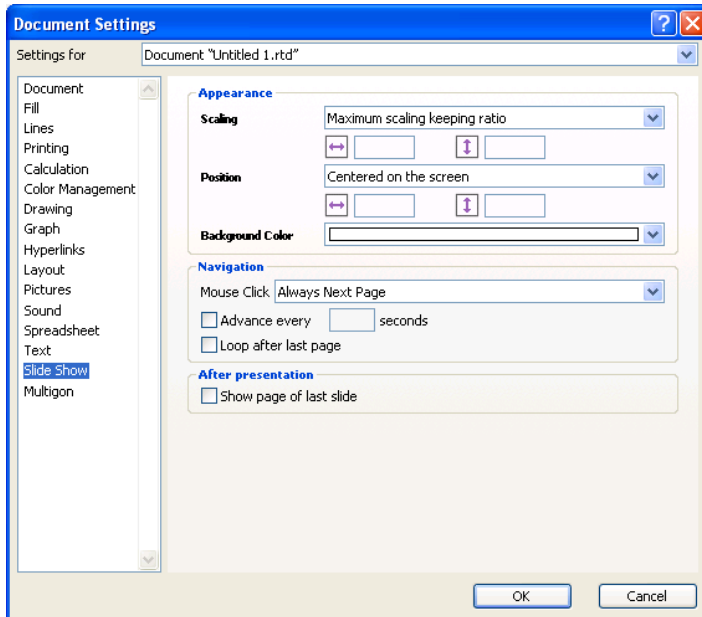
See also

► [Settings](#) [RagTime Reference]

2.4 SLIDETIME PANEL, DOCUMENT SETTINGS

To view this panel, choose the command DOCUMENT SETTINGS from the menu EXTRAS and select the panel SLIDETIME.

When you open the dialog DOCUMENT SETTINGS, you will also find a SlideTime panel. Using the popup menu at the top of the dialog you can select if you want to set the properties for the current document or if you want to set the properties which will be copied to all new documents.



APPEARANCE

SCALING

The first setting in this panel determines, how the pages of this document will be scaled for presentation.

- **NO SCALING**
means, that the document is shown in its original size.
- **MAXIMUM SCALE KEEPING RATIO**
means, that your pages are scaled to be completely visible on the selected monitor, but the ratio between width and height of the objects is not changed. Because RagTime documents can have different page sizes in a single layout, the scaling factor of a particular page has not been determined. The scaling factor is calculated everytime when a slide is created.
- **FULL SCREEN**
If keeping the width height ratio is not so important for your document, you can select the option FULL SCREEN. Using this option each page will be scaled to fit to the monitor both in width and height.

 HORIZONTAL, VERTICAL

The last option is used to specify your own scaling factor for

width and height.

→ Your choices - like all settings in this panel - are saved in the document, this way you can simply prepare a presentation at your desk and show the slides with your selected settings on any other computer on which RagTime 6.5 and SlideTime are installed.

POSITION

You can determine where the scaled pages should be shown on the screen. In general the pre-selected option **CENTERED ON THE SCREEN** is correct, but you can also show the pages always in the **TOP LEFT CORNER OF THE SCREEN** or with a self defined offset from the top left screen corner.

BACKGROUND COLOR

Select a color for the background of your pages in the slide show. Please note that the standard filling after the installation of RagTime 6.5 is a white filling. If you want the components of the layout page to be presented on the selected background color, you have to set the filling to **TRANSPARENT** for all drawing objects in which these components are installed. The same goes for components installed in other components and for graphical text. When using a background color you might want to consider setting the filling of the standard fill style to transparent using the fill style editor in the Windows-Auxiliaries menu.

NAVIGATION

For a self running slide show you have professional possibilities using AppleScript or the calculation functions offered by SlideTime. Usually however the basic settings in this panel will be sufficient.

MOUSE CLICK

Specify the effect of mouse clicks during the presentation.

- **ALWAYS NEXT PAGE**
causes the next page to be displayed.
- **PREVIOUS PAGE IN LEFT HALF OF SCREEN, NEXT PAGE IN RIGHT HALF**
causes the next slide to be displayed only if the mouse click occurs in the right half of the screen. A click in the

left half of the screen causes the previous slide to be displayed.

ADVANCE EVERY N SECONDS

If you like SlideTime to forward to the next page automatically after some time, simply check **ADVANCE EVERY N SECONDS** and enter the number of seconds a slide should be presented before the next one is shown.

LOOP AFTER LAST PAGE

This option jumps to the first page after the last one was shown instead of ending the slide show after the last slide.

AFTER PRESENTATION


SHOW PAGE OF LAST SLIDE

While creating slides for a presentation it can be very helpful to use this option. If you detect a typo on a slide while performing a test slide show, escape the presentation and RagTime reveals the page which was shown as the last slide. Then you can fix the typo and restart the slide show. Remember that you can easily return to the page you have edited by just typing its page number on the keyboard.

See also

▶ [Document Settings](#) [RagTime Reference]

2.5 SLIDETIME AND APPLESCRIPT

 “AppleScript” is a part of the operating system and thus supported by RagTime 6.5 under Mac OS only.

SlideTime expands the “world’s biggest AppleScript dictionary” of RagTime 6.5 by some more commands. SlideTime is “recordable”, i.e. you can click the RECORD button in your script editor and perform a slide show. Afterwards all commands will have been recorded and you can see how easily SlideTime can be controlled using AppleScript.

Nevertheless we will briefly explain the commands. If you like to present the pages of a layout named “Layout 1” as a slide show, just type:

```
start presenting layout "Layout 1" of document 1
```

If you want SlideTime to start with another but the first page, expand the expression by

```
starting page number 5
```

for the fifth page for example. To get the page number of the currently presented page, ask the RagTime application about the `slide page number`. Use this property also for jumping to a different page, simply set another value. For example, in order to jump to the third page use this expression:

```
set slide page number to 3
```

Directly after receiving your command, RagTime will return the control to your script, in most cases this will be before the requested page is shown but in case that the requested page is already prepared as a slide in the background, it will be shown immediatly. If you want to jump to several pages one after the other, you should add some waiting loops to your script. Your script could simply wait for some seconds or it could additionally check for the current page. Refer to your AppleScript documentation how to program loops and check out our sample script.

Just by using the `slide page number` property you can control a complete slide show, but we have added two extra events, `present next page` and `present previous page`. These events are identical with the manual controls for going forward and backward to another page, i.e. a slide show will stop if you try to continue past the slide page number after the last (or before the first) page in the document, while you will get an error if you try to jump to a non existing page using `set slide page`.

With `stop presentation` you can stop a running slide show whenever you want.

There is an extra command which is not available when controlling a slide show manually: `update presented pagel` imagine that you are showing a certain page of a layout in a slide show. While showing that page you manipulate some objects on this page by AppleScript. The slide does not change of course, you see the state of the page at the time when the slide was created. But if your script says `update presented page`, the slide will be recreated in the background and then it will be shown immediatly on the screen. So you can use SlideTime and AppleScript to program your own animations in RagTime. (We have added an example script to show this technique.)

See also

- ▶ [AppleScript and RagTime](#) [RagTime Reference]

2.6 ABOUT SLIDETIME FUNCTIONS

There is yet another possibility to automate a slide show presentation and that one shows the very well integration into RagTime too. Suddenly RagTime has some more calculation functions. Open the function list (e.g. by pressing “command-L”). Best to choose the display mode “Collections” in the popup menu. In the List you will find the group “Slide-Time Functions”. Pop up that group by clicking the triangle in front of the name. You will see ten new calculation functions, introduced by Slide-Time. You can use these functions in formulas which you enter for example in spreadsheet cells, in the text or in a button. With these formulas you are able to control a complete slide show.

- ▶ [STStart](#) [p. 14] – Starts a slide show with the given layout at page one or the given page number.
- ▶ [STStop](#) [p. 14] – Stops a running slide show.
- ▶ [STNextPage](#) [p. 15] – Makes a request to show the page with the given number next. When that page is prepared and no other request was made, the page is shown. If a time in seconds is given, the request will be done delayed.
- ▶ [STSslideCount](#) [p. 15] – Returns how many slides are shown in the current slide show or zero if no slide show is running.
- ▶ [STShownPage](#) [p. 15] – Returns the number of the page which is currently shown or zero if no slide show is running.
- ▶ [STRequestedPage](#) [p. 15] – Returns the number of the page which was requested last time or zero if no slide show is running.
- ▶ [STLayout](#) [p. 14] – Returns the name of the layout which is currently presented by a slide show or nothing if no slide show is running.
- ▶ [STStartTime](#) [p. 16] – Returns the time when the presentation was started.
- ▶ [STLastChange](#) [p. 16] – Returns the time since the last slide is presented.
- ▶ [STUpdate](#) [p. 16] – Updates the current slide. If a time in seconds is given, the update is delayed. The time when the request was made is returned.
- ▶ [STPreparePage](#) [p. 17] – Prepare the given page as next slide and show it on mouse click.
- ▶ [STSetPreviousPage](#) [p. 17] – Sets the given page as next slide when going backwards.

See also

► [RagTime 6.5 Function overview](#) [Formulas and Functions]

2.7 STSTART (FUNCTION)

If this function is executed, the layout whose name is given in the first argument will be presented as a slide show.

If you like to start with another but the first page, pass that page number as the second argument.

If you want another component to be displayed after the show, pass its name as third argument.

If this other component should be shown in a certain display scale, pass the scale factor (1 = 100 %) as fourth argument. To keep the current scale, pass a 0 (zero), to adjust the scale to the window size, pass the text "auto".

If you want another component to be displayed and all other document windows to be closed after the show, pass this as a logical value as fifth argument.

☞ The RagTime window will be maximized and the Inventory will be closed as well..

Syntax

```
STStart (LayoutName;  
StartingPageNumber;  
ComponentAfterShow;  
DisplayScale;  
CloseOtherDocumentWindows)
```

2.8 STSTOP (FUNCTION)

At execution time of this function a running slide show will be stopped.

Syntax

```
STStop ()
```

2.9 STLAYOUT (FUNCTION)

During a slide show this function returns the name of the layout which is presented. You can use the result in another function, for example as argument in **PageCount**. So your slide show control gets independent from the current document.

Syntax**STLayout** ()**2.10 STSLIDECOUNT (FUNCTION)**

The value of this function is the count of slides, which were already presented in the running slide show (including the current slide). This function is very handy for controlling the presentation order of the pages, if you use the value as argument in an **Index** function referring a list of page numbers (see example documents).

Syntax**STSlideCount** ()**2.11 STSHOWNPAGE (FUNCTION)**

This functions returns the page number of the page which is currently presented as a slide.

Syntax**STShownPage** ()**2.12 STREQUESTEDPAGE (FUNCTION)**

Most of the time the value of this function is equal to the value of the function **STShownPage**. But while SlideTime asks you to be a little bit patient because you are jumping to a page which is not yet prepared as a slide, this function returns the page number of the requested page.

Syntax**STRequestedPage** ()**2.13 STNEXPAGE (FUNCTION)**

With this function you can request another page to be presented next. The first argument is the number of the page you are requesting. You can pass a number of seconds as second argument to specify a time span the request should be delayed. Depending on the capacity of your computer this time span could be a little longer but the waiting time will not be less than the given time span. If you are requesting another but the next page,

you have to add the time SlideTime needs to prepare the slide. If another slide is requested during the preparation of this slide, your request will be canceled. While waiting the given time span you can show other slides, but only one waiting time span can be timed, every new waiting time setting deletes a previous timer, this is also true for time spans given with the update function **STUpdate** and for the automatic forwarding specified in the Document Settings dialog box.

Syntax

STNextPage (*NextPageNumber*; *SecondsToWait*)

2.14 STUPDATE (FUNCTION)

When this function is executed the slide which is currently presented will be recreated from the same page and be shown again immediately afterwards. You can specify a waiting period in seconds to delay your update request. When the time has expired, the slide will be updated. With this functions you can present an animation of your layout page (see example documents).

Syntax

STUpdate (*SecondsToWait*)

2.15 STSTARTTIME (FUNCTION)

The value of this function is the time point at which the current slide show has been started.

Syntax

STStartTime ()

2.16 STLASTCHANGE (FUNCTION)

This function returns the time point, at which the current slide was presented or updated last.

Syntax

STLastChange ()

2.17 STPREPAREPAGE (FUNCTION)

With this function you can determine which page shall be shown next when you click with the mouse. So you are able to control the slide order in a manual presentation. This is very useful if you like to prepare multiple presentations of different length of a single layout.

Syntax

STPreparePage (*PageNumber*)

2.18 STSETPREVIOUSPAGE (FUNCTION)

Use this function to specify the the page to be shown when going backwards. That comes in handy if you want to show a sequence of slides again

Syntax

STSetPreviousPage (*PageNumber*)

2.19 SLIDETIME SAMPLE DOCUMENTS

To try out the basic functionality of SlideTime, that is, the presentation of pages as slides in a slide show, you don't need extra examples. Just open your favorite document and start your first slide show. Try out the different settings in the SlideTime panels in the Document Settings and the Settings dialog boxes as described in the documentation.

We have collected some examples to show the usage of the calculation functions, that SlideTime brought to you and the new AppleScript functionality.

Alert Slide

This is a very simple example, which uses the function **STStart** to present a slide show automatically. In the yellow colored cell range is a list of numbers which could be interpreted as account transactions. In the bottom cell the sum is calculated. Look at the formula in the blue cell: If the sum becomes smaller than zero, the layout "Overdrawn warning" is shown automatically in a slide show. You can click at once to dismiss the slide. After roundabout three seconds the slide will disappear itself because in the Document Settings the automatic forward function is activated but there is only one page.

Try it out: Add a negative number in the yellow range, overdraw your account!

Automation with Formulas

This document does not contain any layout, which could be presented. It just has one spreadsheet - but that one can be used universally. The formulas in the blue cells control a slide show in any document. These formulas show only the basic automation which could also be set in the Document Settings panel. But if you like you can copy this spreadsheet in any other document. (To do this open the inventory of the other document and drag the spreadsheet from the inventory of this sample document into the other inventory).

If you start the slide show in that other document now, you will see the automatic forwarding after about three seconds. Of course you can specify any other waiting time in the cell with the yellow background.

Different Order

This document does really have a boring layout. The ten pages just show their page number. But so you can easily see what happens in the slide show. Start the slide show and the spreadsheet in the document will again control the automatic changing of the slides. But this time the pages are not shown in their numeric order but in the order that is given by the page numbers in the yellow column of the spreadsheet. Again, in the blue cells you will find the formulas controlling the presentation.

Long or Short

Using the function `STPreparePage` two different presentations of a single layout are implemented in this document. The spreadsheet lists the page numbers to be presented at next mouse click in the long and in the short presentation.

The numbers of the pages to be displayed are listed in the spreadsheet. The blue cells contain the formulas causing SlideTime to display the desired page on the next mouse click.

Dow Jones live

This document does not use AppleScript commands but the calculation functions of SlideTime to perform an animation. Click the button in the layout to start the slide show or start the presentation as usual by selecting the menu command. In the following seconds the spreadsheet will be prepared for the new animation. After that you will see a new slide every two seconds. The sample simulates the intra day chart of the Dow Jones stock index. The values are random but take this example as a live presentation of any values of your interest which could be brought into your

RagTime document by some automation. This document shows a time-lapse course of the intra-day chart while the lines for the day maximum and minimum jump to the correct values without deleting the old line and watching the update of the new graph; this all happens in the background when the new slide is prepared. You see the new slide replacing the old one at once.